

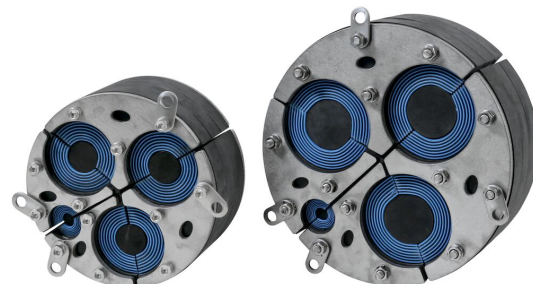


Bague Roxtec H3+1 UG™

Passages pour des câbles entrant via des fondations

La bague Roxtec H3+1 UG™ est idéale pour les câbles d'alimentation disposés en tréfle et un câble de mise à la terre qui pénètre dans les fondations. Elle fonctionne comme barrière durable contre les inondations, le gaz, l'humidité et les rongeurs. C'est une bague composée de quatre parties qui est facile à installer, même dans des environnements humides avec des écoulements d'eau. Le passage résiste aux courbures extrêmes des câbles, il a une tolérance de +3 mm vis-à-vis de l'ouverture et il comprend un témoin qui indique lorsque la compression suffisante est atteinte. La bague peut être installée dans des KOS (knock-out sleeves), des fourreaux ou des carottages.

- Résistant aux rongeurs
- Installation facile et rapide
- Assure un excellent maintien des câbles



Caractéristiques du produit



Étanche à l'eau



Étanche au gaz



IP/UL NEMA

Structure d'installation



Béton

Type de fixation



Trou existant



Douille existante

Classements et certificats

Étanchéité

- Gaz: 0,3 bars (constant)
- Eau: 0,3 bars (constant)
- IP 68

Éléments d'étanchéité

Éléments d'étanchéité



Bague H3+1 UG™



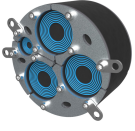
Lubrifiant Roxtec

Pour plus d'informations, veuillez consulter [roxtec.com](https://www.roxtec.com).

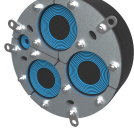


Kits de passage préconfigurés

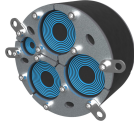
mm/kg



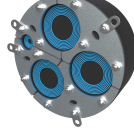
H3+1 150 UG



H3+1 200 UG



H3+1 153 (6") UG



H3+1 201 (8") UG

Titre	Configuration	Dimensions d'ouverture Ø	Poids	N° art.
H3+1 150 UG	4x (10.0-53.0)	150 - 153	2.6	192261
H3+1 200 UG	4x (10.0-68.0)	200 - 203	4.2	192082
H3+1 153 (6") UG	4x (10.0-53.0)	152.5 - 155.5	2.6	224524
H3+1 201 (8") UG	4x (10.0-68.0)	201 - 204	4.7	224542

The product information provided by Roxtec does not release the purchaser of the Roxtec system, or part thereof, from the obligation to independently determine the suitability of the products for the intended process, installation and/or use.

Roxtec gives no guarantee for the Roxtec system or any part thereof and assumes no liability for any loss or damage whatsoever, whether direct, indirect, consequential, loss of profit or otherwise, occurred or caused by the Roxtec systems or installations containing components not manufactured by an authorized manufacturer and/or occurred or caused by the use of the Roxtec system in a manner or for an application other than for which the Roxtec system was designed or intended.

Roxtec expressly excludes any implied warranties of merchantability and fitness for a particular purpose and all other express or implied representations and warranties provided by statute or common law. User determines suitability of the Roxtec system for intended use and assumes all risk and liability in connection therewith. In no event shall Roxtec be liable for indirect, consequential, punitive, special, exemplary or incidental damages or losses.

The Roxtec products are offered and sold in accordance with the conditions of the Roxtec General Terms of Sales. The latest version of the Roxtec General Terms of Sales can be downloaded from <https://www.roxtec.com/en/about-us/about-roxtec/general-terms-of-sales/>

We reserve the right to make changes to the product and technical information without further notice. Any errors in print or entry are no claims for indemnity. The content of this publication is the property of Roxtec International AB and is protected by copyright.

This document was generated on: 2024-04-18